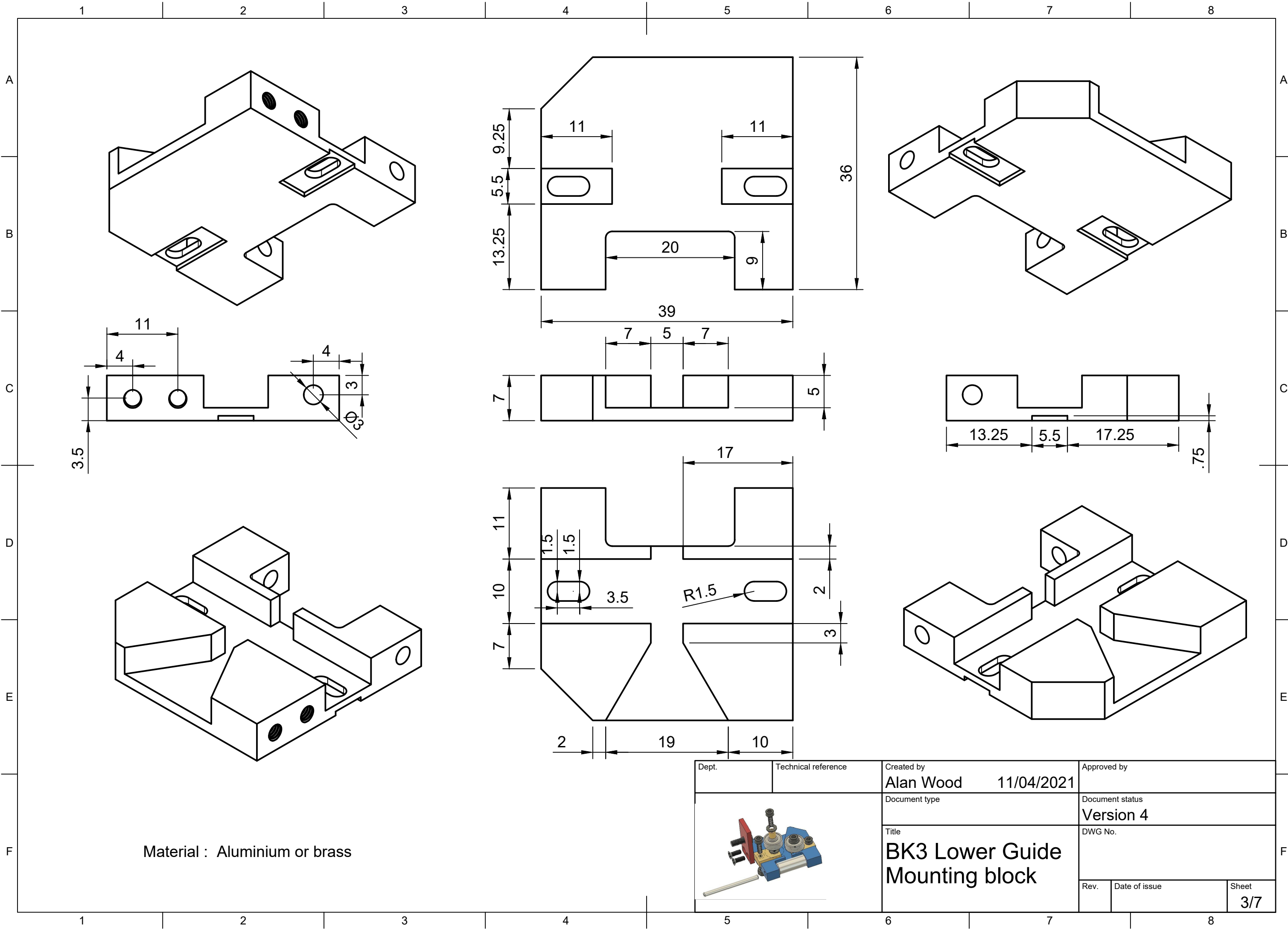
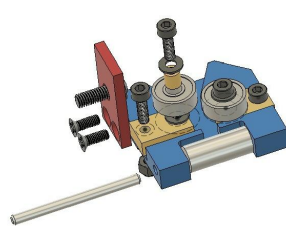


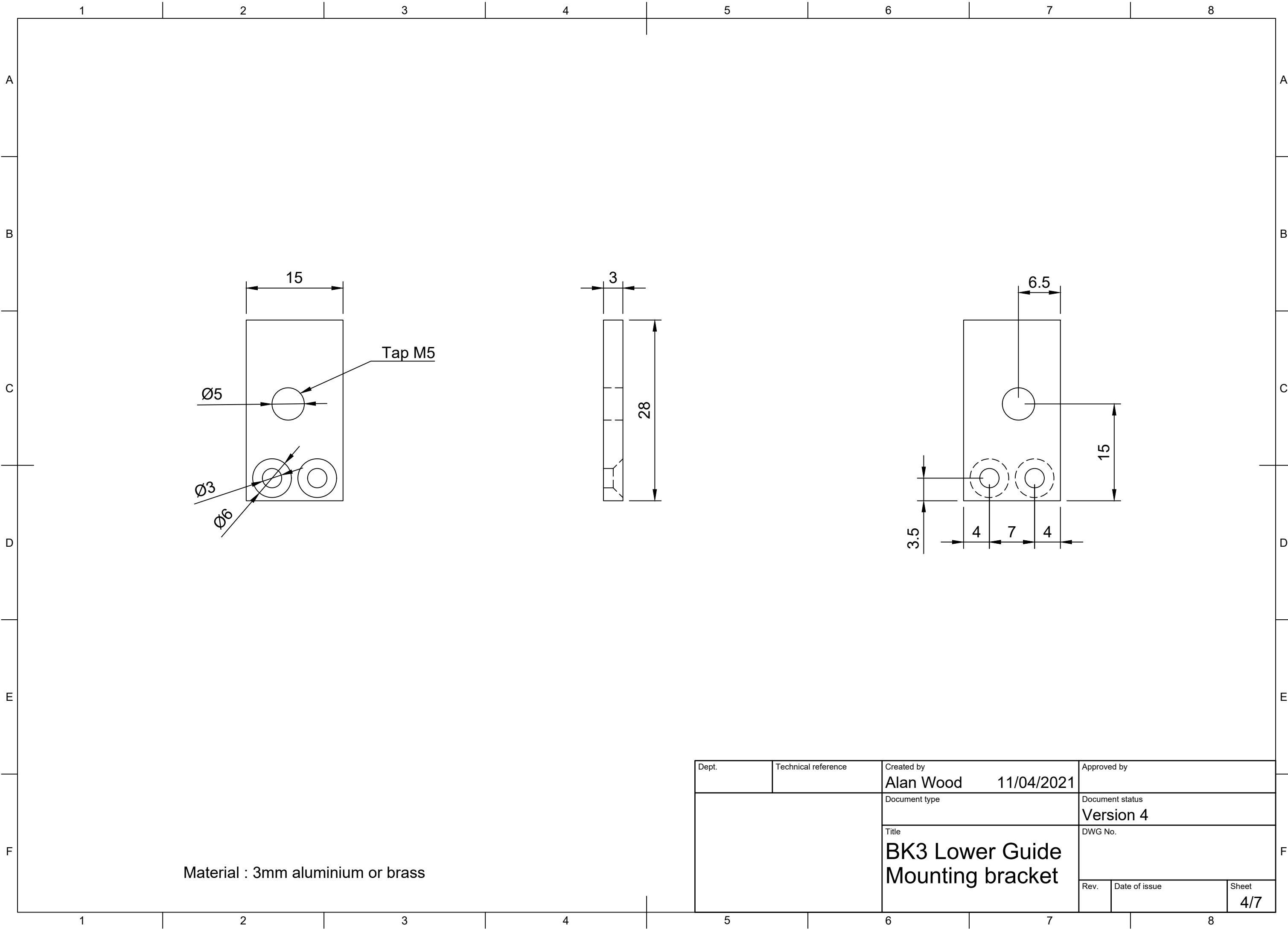
The nut retaining slot could be full width for ease of machining.
 The arbor for the roller could be 3mm silver steel retained with Loctite or could be a 3mm roll pin with mounting hole size adjustment.
 Bearings are R3-2RS parts from Bearing Boys (stock no. KLNJ3/16-2RS-NEU)

| | | | |
|-------|---------------------|--|-------------------------------------|
| Dept. | Technical reference | Created by Alan Wood 11/04/2021 | Approved by |
| | | Document type | Document status Version 4 |
| | | Title BK3 Lower Guide General Assembly | DWG No. |
| | | Rev. | Date of issue |
| | | Sheet 2/7 | |



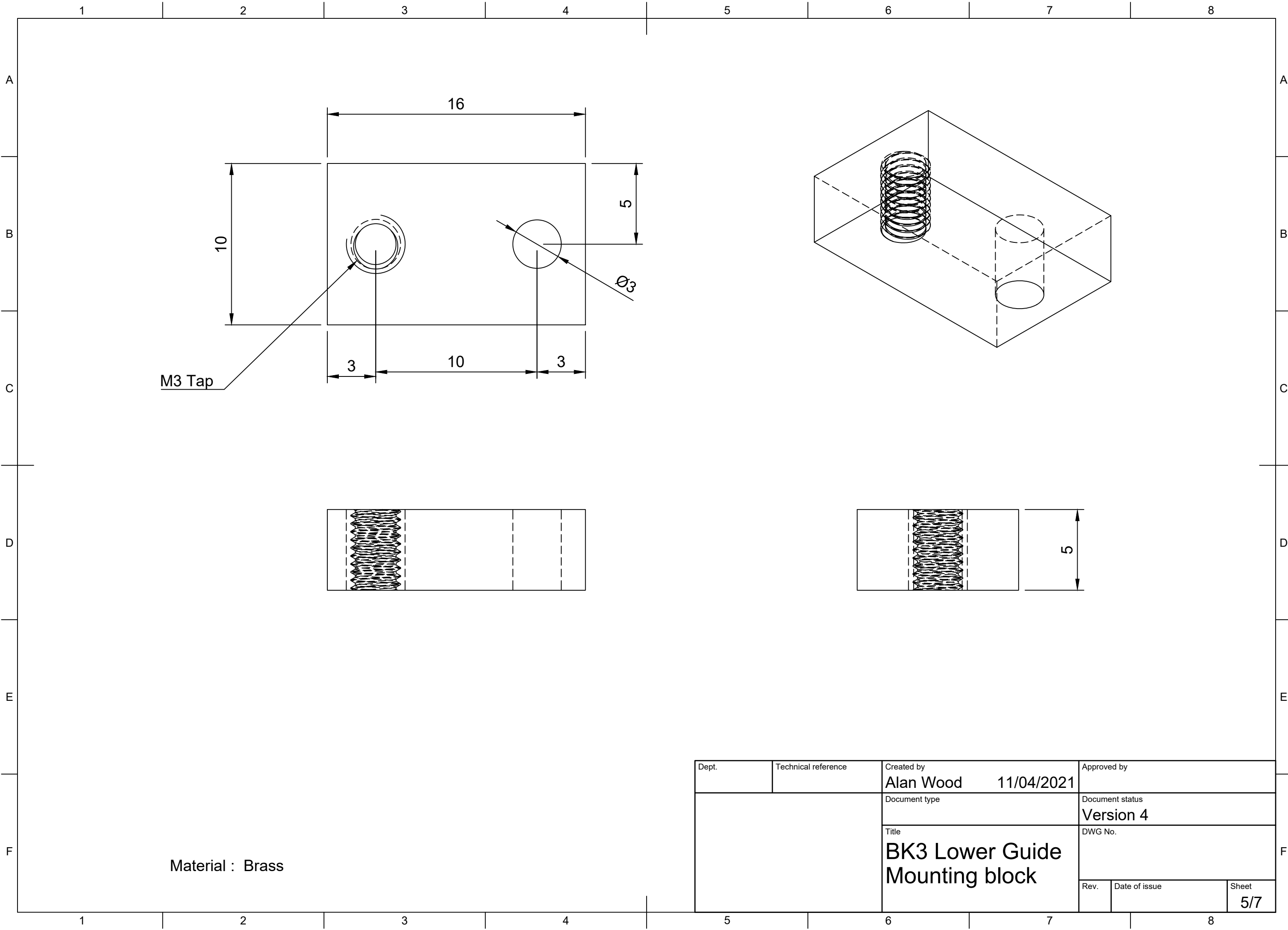
Material : Aluminium or brass

| | | | |
|---|---------------------|--|-------------------------------------|
| Dept. | Technical reference | Created by Alan Wood 11/04/2021 | Approved by |
|  | | Document type | Document status Version 4 |
| | | Title BK3 Lower Guide Mounting block | |
| Rev. | Date of issue | Sheet 3/7 | |



Material : 3mm aluminium or brass

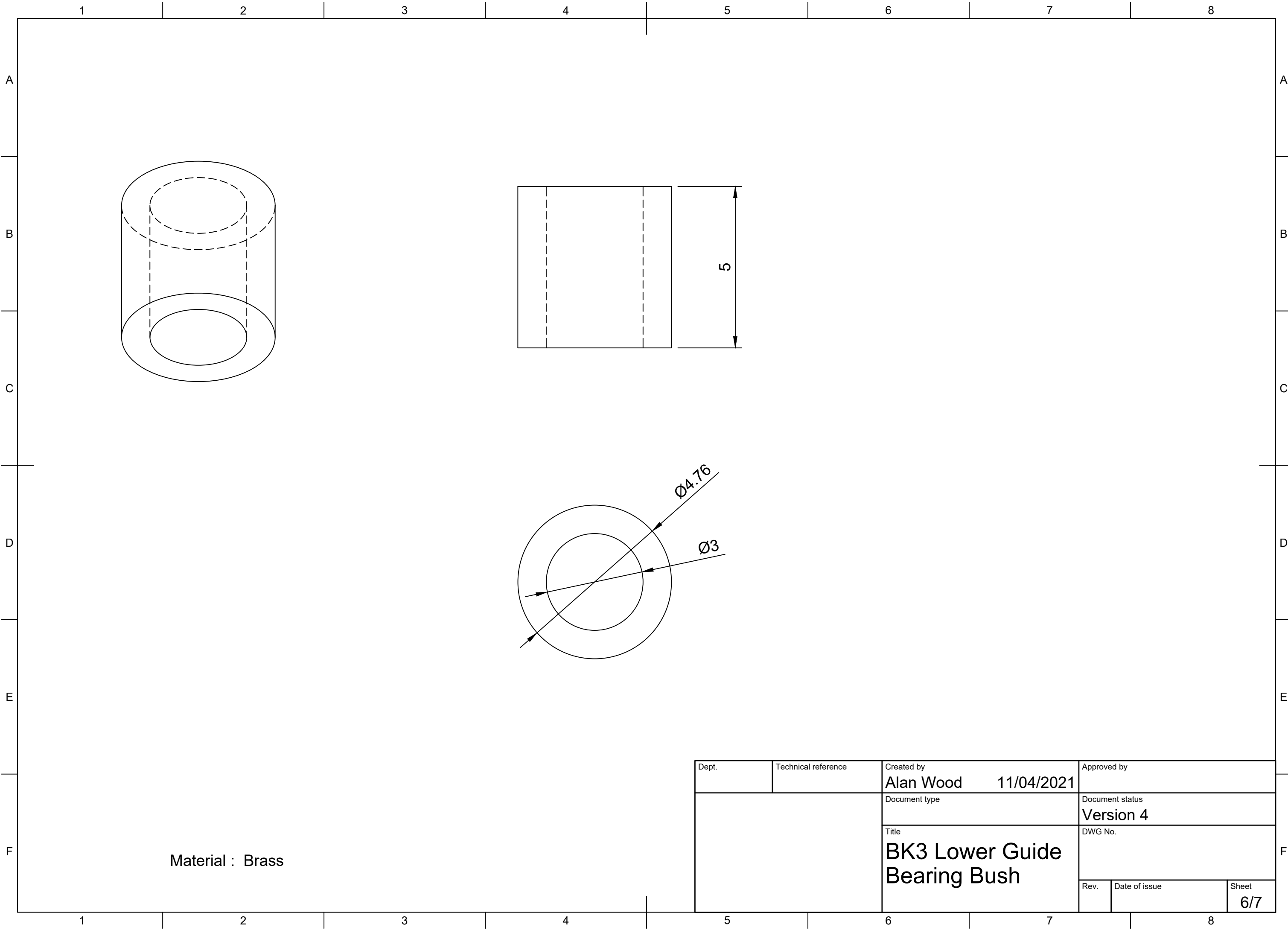
| | | | |
|-------|---------------------|--|-------------------------------------|
| Dept. | Technical reference | Created by Alan Wood 11/04/2021 | Approved by |
| | | Document type | Document status Version 4 |
| | | Title BK3 Lower Guide Mounting bracket | DWG No. |
| | | Rev. | Date of issue |
| | | Sheet 4/7 | |



M3 Tap

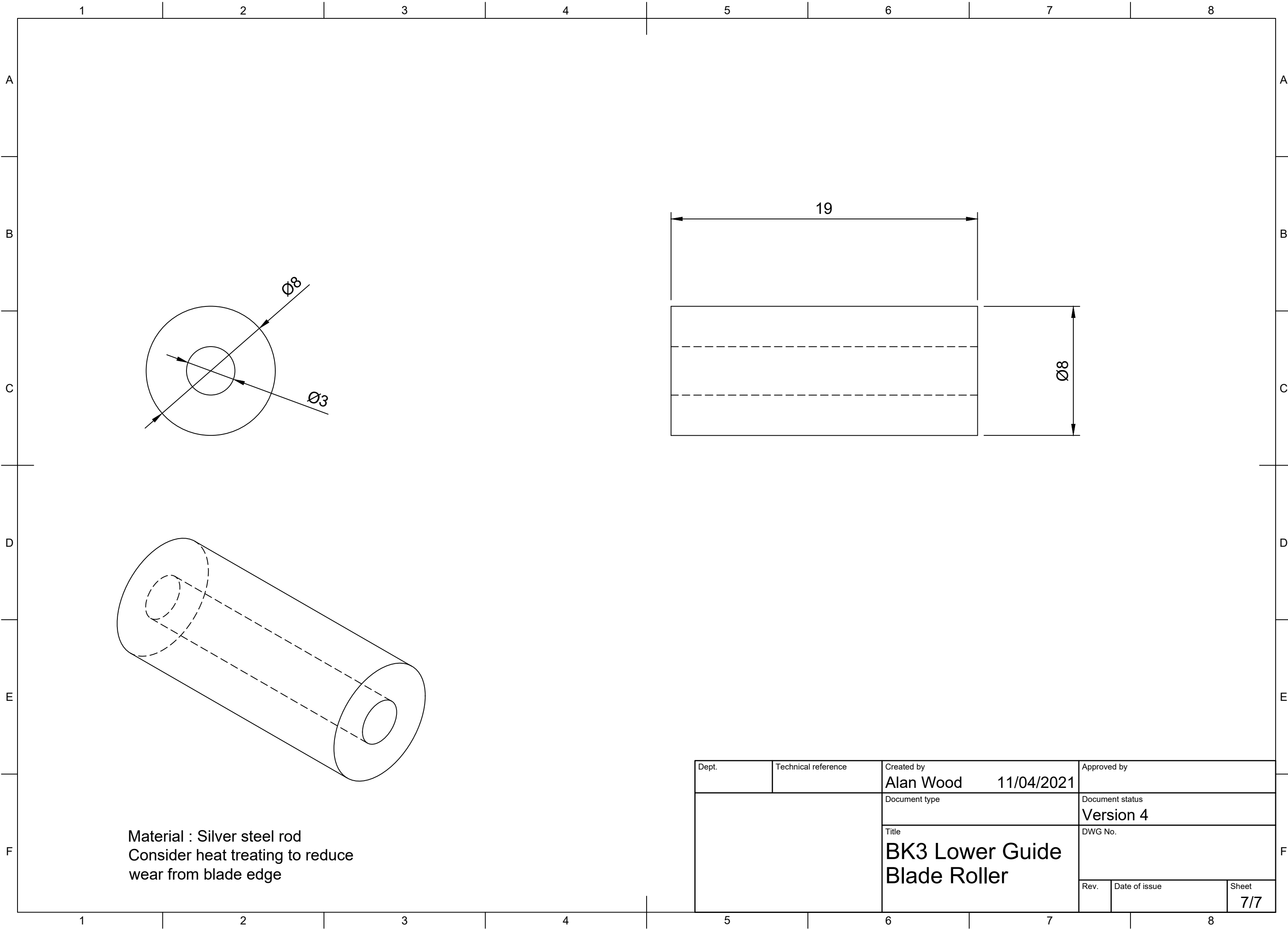
Material : Brass

| | | | |
|-------|---------------------|--|-------------------------------------|
| Dept. | Technical reference | Created by Alan Wood 11/04/2021 | Approved by |
| | | Document type | Document status Version 4 |
| | | Title BK3 Lower Guide Mounting block | DWG No. |
| Rev. | Date of issue | Sheet 5/7 | |



Material : Brass

| | | | |
|-------|---------------------|--|-------------------------------------|
| Dept. | Technical reference | Created by Alan Wood 11/04/2021 | Approved by |
| | | Document type | Document status Version 4 |
| | | Title BK3 Lower Guide Bearing Bush | |
| | | Rev. | Date of issue |
| | | Sheet 6/7 | |



Material : Silver steel rod
 Consider heat treating to reduce
 wear from blade edge

| | | | | |
|-------|---------------------|--|-------------------------------------|---------------------|
| Dept. | Technical reference | Created by Alan Wood | 11/04/2021 | Approved by |
| | | Document type | Document status Version 4 | |
| | | Title BK3 Lower Guide Blade Roller | DWG No. | |
| | | Rev. | Date of issue | Sheet 7/7 |