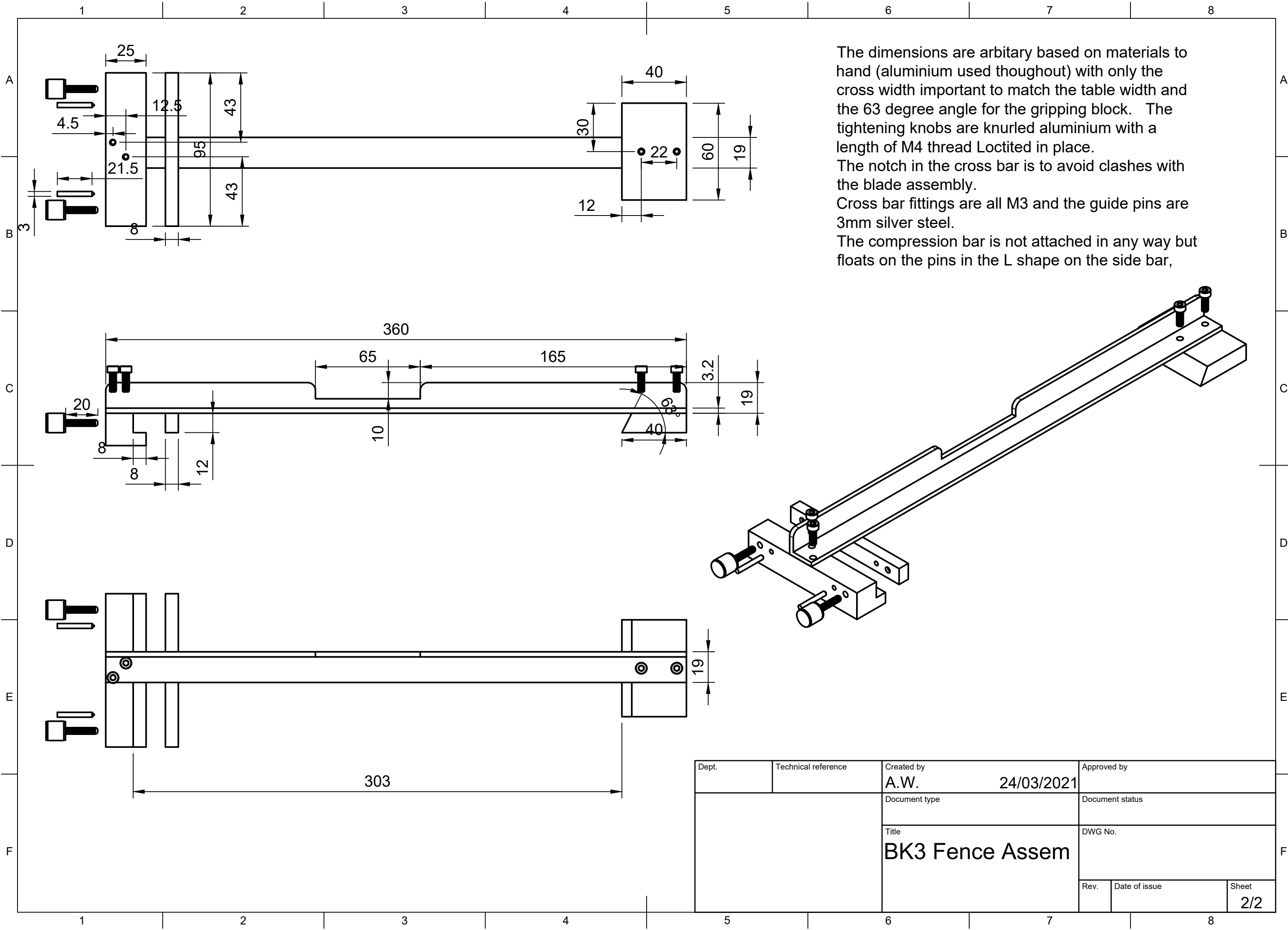


by \_\_\_\_\_  
status \_\_\_\_\_

|                                 |               |                     |  |
|---------------------------------|---------------|---------------------|--|
| Title<br><b>BK3 Fence Assem</b> |               | DWG No.<br>_____    |  |
| Rev.                            | Date of issue | Sheet<br><b>1/2</b> |  |



The dimensions are arbitrary based on materials to hand (aluminium used throughout) with only the cross width important to match the table width and the 63 degree angle for the gripping block. The tightening knobs are knurled aluminium with a length of M4 thread Loctited in place. The notch in the cross bar is to avoid clashes with the blade assembly. Cross bar fittings are all M3 and the guide pins are 3mm silver steel. The compression bar is not attached in any way but floats on the pins in the L shape on the side bar,

|       |                     |                                 |                 |             |
|-------|---------------------|---------------------------------|-----------------|-------------|
| Dept. | Technical reference | Created by<br><b>A.W.</b>       | 24/03/2021      | Approved by |
|       |                     | Document type                   | Document status |             |
|       |                     | Title<br><b>BK3 Fence Assem</b> | DWG No.         |             |
| Rev.  | Date of issue       | Sheet                           |                 | <b>2/2</b>  |