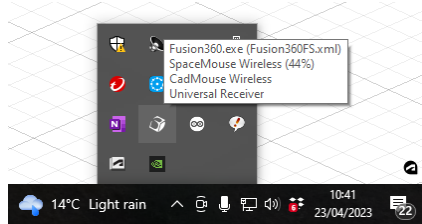
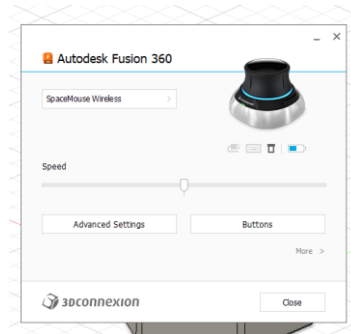


## SpaceMouse with Fusion 360

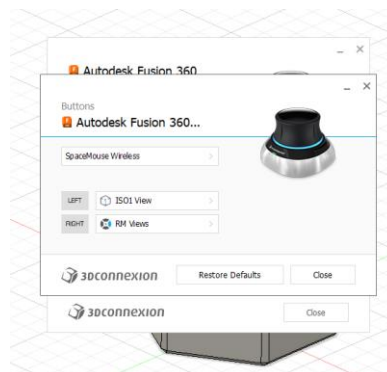
- 1 Go to the bottom left of your screen (Windows) and click on the up arrow. Select the 3Dconnexion icon and double click. Note that the SpaceMouse knows which application you are working on so make sure Fusion 360 is maximised to occupy full screen.



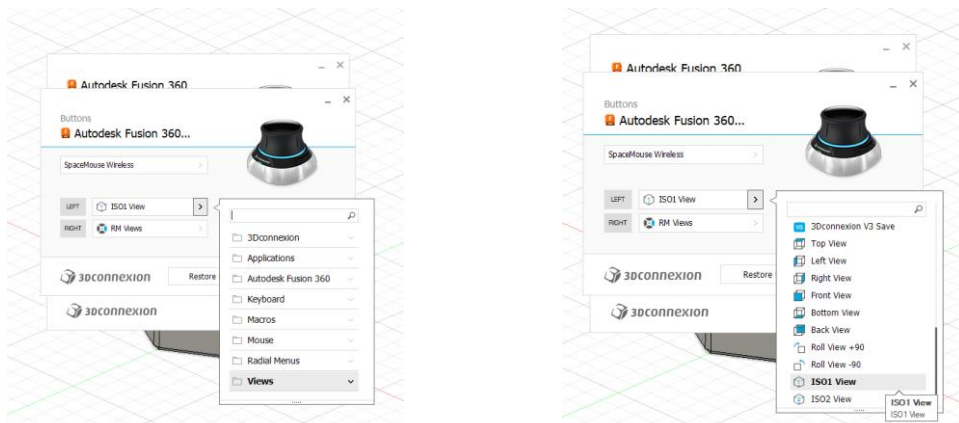
- 2 This will bring up the following 3Dconnexion screen with AUTODESK FUSION 360 as the current associated application. Use the side arrow on the top box to select the SpaceMouse if it is not the selected device.



- 3 Click on the BUTTONS box and you will get the following screen. Click on the side arrow on the LEFT selection box.



- 4 Click on VIEWS and slide down to the bottom of the selection list and select ISO1 VIEW



- 5 Once this button is allocated, you can then select another function for the right button either from VIEWS or from the dedicated Fusion 360 list.